

# Compact Lift Tables

X Series fits the need for maximum space efficiency

## Chibichan X Capacity 100~750kg

Hydraulic Unit Size



E : 325X350X160



Foot Pedal Type

X50C



Electric Operated Type

X75A-B



2-Stage Type

2X050510B-B

Model	Maximum Capacity (kg)	Lifting Height (mm)	Table Dimensions (mm)				Motor (kw)	Lifting Speed (sec)		Weight (kg)	Hydraulic Unit	Cable (m)		High Pressure Hose (m)
			Width	Length	Minimum Height	Maximum Height		50Hz	60Hz			Power Source	Operating SW	
<b>3 Phase 200V</b>														
X050406A-B	500	390	460	650	140	530	0.375	14	12	82	E	5.3	5.3	2
X50SA-B		630			210	840		22	18	111				
X50A-B		650			150	800		20	16	126				
X75A-B	750	650	518	1,010	150	800	Internal	28	23	127	Internal	4.7	3	-
2X050510A-B	500	1,170	235	1,405	29	24		142						
<b>Single Phase 100 V</b>														
X10B-B	100	400	500	650	131	531	0.2	12	10	63	Internal	5.3	5.3	-
X20B-B	200	400		150	715	21		17	66					
X25B-B	250	565		813	150	715		34	28	82				
X050406B-B	500	390	460	650	140	530	0.4	14	12	58	E	5.3	5.3	2
X50SB-B		630			210	840		22	18	111				
X50B-B		650			150	800		20	16	133				
X75B-B	750	650	518	1,010	150	800	Internal	28	23	134	Internal	4.7	3	-
2X050510B-B	500	1,170	235	1,405	29	24		140						
<b>Foot Pedal Type</b>														
X20C	200	400	500	650	131	531	Foot Pedal Type	-	-	55	Internal	-	-	-
X25C	250	565		813	150	715				71				
X50C	500	650		150	800	115								
X75C	750	650	518	1,010	116	Foot Pedal Type								
2X050510C	500	1,170	235	1,405	128									

## Mini X Capacity 300~500kg



X050815B

Model	Maximum Capacity (kg)	Lifting Height (mm)	Table Dimensions (mm)				Motor (kw)	Lifting Speed (sec)		Weight (kg)	Hydraulic Unit	Cable (m)		High Pressure Hose (m)
			Width	Length	Minimum Height	Maximum Height		50Hz	60Hz			Power Source	Operating SW	
<b>3 Phase 200V</b>														
X030612A-B	300	800	600	1,200	950	0.375	16	14	166	Internal	4.7	3	-	
X030812A-B			800						191					
X030615A-B			600						186					
X030815A-B	800	196	1,500	150	950	0.375	20	17	186	Internal	4.7	3	-	
X050612A-B	800	168												
X050812A-B	800	193												
X050615A-B	600	168	1,500	150	950	0.375	28	24	190	Internal	4.7	3	-	
X050815A-B	600	190												
X050815A-B	800	200												
<b>Single Phase 100 V</b>														
X030612B-B	300	800	600	1,200	950	0.4	19	16	161	Internal	4.7	3	-	
X030812B-B			800						186					
X030615B-B			600						181					
X030815B-B	800	191	1,500	150	950	0.4	25	21	191	Internal	4.7	3	-	
X050612B-B	800	163												
X050812B-B	800	188												
X050615B-B	600	185	1,500	150	950	0.4	43	36	185	Internal	4.7	3	-	
X050815B-B	600	195												
X050815B-B	800	195												

Regarding Specifications (see pages 23, 24)

(L) X ○ ○ - B



※Push buttons are standard

Let go and it stops

# Super Low Profile Lift Tables

LX Series allows easy loading and unloading of cargo without requiring a below-floor level pit

## Capacity 250~3000kg



LX100N-B



LX300N-B

Safety Toe Guard

Minimum Height

LX25 Series ▶ 59mm

LX50 Series ▶ 60mm

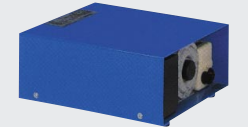
LX100 Series ▶ 76mm

LX200 Series ▶ 95mm

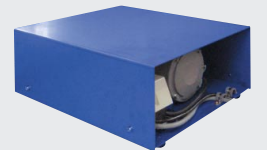
LX300 Series ▶ 134mm



Hydraulic Unit is separate from lift table (all Models)



G : 3·1 Phase Unit  
W325×L350×H160mm



H : 3 Phase Unit  
W360×L430×H176mm



I : 3 Phase Unit  
W459×L555×H184mm

Model	Maximum Capacity (kg)	Lifting Height (mm)	Table Dimensions (mm)				Motor (kw)	Lifting Speed (sec)		Weight (kg)	Hydraulic Unit	Cable (m)		High Pressure Hose (m)
			Width	Length	Minimum Height	Maximum Height		50Hz	60Hz			Power Source	Operating SW	
<b>3 Phase 200V</b>														
LX25SA-B	250	470	518	810	59	529	0.375	13	11	98	G	5.3	3.5	1.55
LX25LA-B				1,010		759		18	15	116				
LX50SA-B				470		810		530	22	19				
LX50LA-B	500	700	520	1,010	60	760	0.75	33	28	123	H	5	3	2.5
LX100N-B	1,000	900	780	1,280	76	976		25	21	194				
LX100W-B								215						
LX200N-B							343							
LX200W-B	2,000	1,000	1,000	1,500	95	995	1.5	29	24	423	I	5.3	3.5	2.4
LX200WL-B	450													
LX300N-B	732	1,350	417											
LX300WM-B	3,000	861	1,000	1,500	134	2,000	31	26	493	4.7	2.6	2.4		
LX300WL-B	525													
<b>Single Phase 100 V</b>														
LX25SB-B	250	470	518	810	59	529	0.4	11	9	93	G	5.3	3.5	1.55
LX25LB-B				1,010		759		16	13	111				
LX50SB-B				470		810		530	21	18				
LX50LB-B	500	700	520	1,010	60	760	0.4	31	26	124	G	5.3	3.5	1.55

# Heavy Duty Lift Tables

The Simple Solution to Lifting Heavy Loads to a Comfortable Working Height

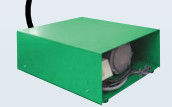
**NX Series** Capacity **1000kg**



X10410-B

Separate

Width×Length×Height =  
360×430×176 (mm)



High Pressure  
Hose 3m



NX100WC-B

1 Stage Type

Internal



2X11214-B

2 Stage Type

1 Stage Type																		
Model	Maximum Capacity (kg)	Lifting Height (mm)	Table Dimensions (mm)				Motor (kw)	Lifting Speed (sec)		Weight (kg)	Hydraulic Unit	Cable (m)		High Pressure Hose (m)				
			Width	Length	Minimum Height	Maximum Height		50Hz	60Hz			Power Source	Operating SW					
X10410-B	1,000	600	400	1,000	155	755	0.75	13	11	163	Separate	5	3					
X10413-B		845		1,340	1,000	24		20	210									
X10415-B		950		1,500	205	1,155		25	21					248				
NX100NA-B		400	640	850	155	555	0.75	10	8	166	Internal	4.3	3					
NX100NB-B		600		1,000		755		13	11					180				
NX100NC-B		845		1,340		1,000		24	20					230				
NX100ND-B		950		1,500		205		1,155	17					14	253			
NX100NE-B		1,305		1,800	205	1,510	25	21	318									
NX100WA-B		400		780	850	155	555	0.75	10	8				185	Internal	4.3	-	
NX100WB-B		600			1,000		755		13	11								199
NX100WC-B		845			1,340		1,000		24	20								249
NX100WD-B		950	1,500		205		1,155		17	14	274							
NX100WE-B		1,305	1,800		205	1,510	25	21	340									
NX100WCY-B		845	1,000		1,340	155	1,000	0.75	24	20	264	Internal	4.9	-				
NX100WDY-B		950			1,500		1,155		17	14								286
NX100WEY-B		1,305			2,000	205	1,510	25	21	362								
X11224-B	1,305	1,200		2,400	207	1,512	1.13	25	21	505	4.8				-			

2 Stage Type														
Model	Maximum Capacity (kg)	Lifting Height (mm)	Table Dimensions (mm)				Motor (kw)	Lifting Speed (sec)		Weight (kg)	Hydraulic Unit	Cable (m)		High Pressure Hose (m)
			Width	Length	Minimum Height	Maximum Height		50Hz	60Hz			Power Source	Operating SW	
2X10607-B	1,000	900	600	780	255	1,155	0.75	33	28	231	Internal	4.8	3	-
2X10610-B		1,250		1,000		1,505		45	38					
2X10910-B		1,400	850	1,150		1,655	1.13	24	20	335				
2X10611-B			600					1.13	28	23				
2X10911-B		850	1.13	28		23	365							
2X11211-B		1,200		1.13		66	55	385						
2X10614-B		600	1.13			34	28	375						
2X10914-B		850		1.13		34	28	405						
2X11214-B		1,200	1.13		66	55	600							
2X10618-B		600		1.5	66	55	605							
2X10918-B		850	1.5		49	41	726							
2X11218-B		1,200		1.5	49	41	827							

Regarding Specifications (see pages 25, 26)

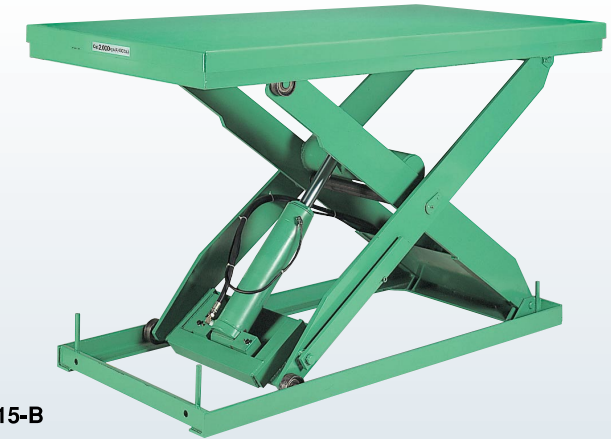
( N ) X ○ ○ - B

※Push buttons are standard



**NX Series**

Capacity **2000~3000kg**



X21015-B

Model	Maximum Capacity (kg)	Lifting Height (mm)	Table Dimensions (mm)				Motor (kw)	Lifting Speed (sec)		Weight (kg)	Hydraulic Unit	Cable (m)		High Pressure Hose (m)						
			Width	Length	Minimum Height	Maximum Height		50Hz	60Hz			Power Source	Operating SW							
X20713-B	2,000	800	700	1,300	200	1,000	1.5	18	15	340	Internal	4.7	3	-						
X21013-B			1,000												388					
X20715-B		700	1,500	215	1,215	23		19	378											
X21015-B		1,000	428																	
X21020-B		1,000	2,000	250	1,500	30		25	515											
X21224-B		1,250	1,200	2,400	252	1,502		30	25	620										
X30713-B		3,000	800	700	1,300	235		1,035	1.5	22					19	383	Internal	4.7	3	-
X31013-B				1,000																
X30715-B			700	1,500	245	1,245		30		25					421					
X31015-B			1,000	482																
X31020-B	1,000		2,000	280	1,530	38	31	573												
X31224-B	1,250		1,200	2,400	280	1,530	38	31		670										

EL100-F (Rotating platform comes standard)



Movable Skid Type

A rotating platform is attached to the top of the table.



Mawaru Rotating Platform



Foot Switch

※Can also be attached to other models.

Model	Maximum Capacity (kg)	Lifting Height (mm)	Table Dimensions (mm)				Motor (kw)	Lifting Speed (sec)		Weight (kg)	Hydraulic Unit	Cable (m)		High Pressure Hose (m)
			Width	Length	Minimum Height	Maximum Height		50Hz	60Hz			Power Source	Operating SW	
EL100-F	1,000	600	1,015	1,015	326	926	0.75	13	11	317	Internal	4.3	3	-

# Heavy Duty Lift Tables

The Simple Solution to Lifting Heavy Loads to a Comfortable Working Height

**AX Series** Capacity 1000~3000kg

## 1 Stage Type



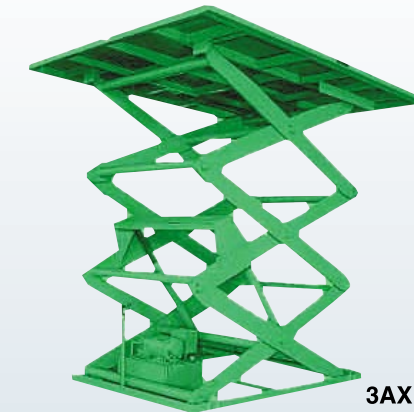
AX100RG-B

## 2 Stage Type



2AX100BS-B

## 3 Stage Type



3AX100FT-B

Hydraulic Unit is separate

- J : 450×500×310
- K : 500×600×350
- L : 600×700×350
- M : 600×700×450
- N : 700×800×450

※Unit height is height including cover.

## Regarding Specifications (see pages 27, 28)

AX ○ ○ - B

※Push buttons are standard



Let go and it stops

1 Stage Type														
1000kg Capacity														
Model	Maximum Capacity (kg)	Lifting Height (mm)	Table Dimensions (mm)				Motor (kw)	Lifting Speed (sec)		Weight (kg)	Hydraulic Unit	Cable (m)		High Pressure Hose (m)
			Width	Length	Minimum Height	Maximum Height		50Hz	60Hz			Power Source	Operating SW	
AX100RF-B	500	500	1,000	770	270	0.7	Internal	3	5	-	3	5	-	
AX100RG-B	800	1,000	1,340	1,070										
AX100RH-B	900	1,250	1,500	1,170										
AX100SH-B			1,500	1,170										
AX100RI-B	1,080	1,250	1,800	1,350										
AX100SI-B			1,800	1,350										
AX100VJ-B			1,800	1,350										
AX100XJ-B	1,200	1,200	2,000	1,470										
AX100YJ-B			2,000	1,470										
AX100ZJ-B			2,000	1,470										

2 Stage Type																	
1000kg Capacity																	
Model	Maximum Capacity (kg)	Lifting Height (mm)	Table Dimensions (mm)				Motor (kw)	Lifting Speed (sec)		Weight (kg)	Hydraulic Unit	Cable (m)		High Pressure Hose (m)			
			Width	Length	Minimum Height	Maximum Height		50Hz	60Hz			Power Source	Operating SW				
2AX100AP-B	1,000	960	600	800	254	1,214	1.5	3	5	-	3	5	-				
2AX100AR-B														1,140	950	1,394	
2AX100BR-B		1,380	900	1,150		1,634								22	18	332	Internal
2AX100AS-B														27	23	314	
2AX100BS-B		1,650	900	1,380		1,904								31	25	384	Internal
2AX100BT-B														35	29	465	
2AX100CT-B		2,000	1,200	1,670		2,254								45	37	534	Internal
2AX100BV-B														57	37	597	
2AX100CV-B		2,400	1,200	2,000		2,750								60	50	825	Internal
2AX100CW-B														60	50	825	
2000kg Capacity																	
2AX200GP-B	2,000	960	650	800	330	1,290	1.5	3	5	-	3	5	-				
2AX200GR-B														1,140	950	1,470	
2AX200HR-B		1,380	900	1,150		1,710								23	19	300	K
2AX200GS-B														28	23	360	
2AX200HS-B		1,650	1,200	1,380		1,980								38	32	470	Internal
2AX200HT-B														41	34	510	
2AX200IT-B		2,000	1,200	1,670		2,350								43	35	620	L
2AX200HV-B														58	49	870	
2AX200IV-B		2,400	1,200	2,000		2,780								68	49	930	M
2AX200HW-B														77	64	1,100	
2AX200IW-B	77	64	1,170	N													
3000kg Capacity																	
2AX300JS-B	3,000	1,380	900	1,150	400	1,780	2.2	3	5	3	3	5	3				
2AX300JT-B														1,650	1,380	2,070	
2AX300KT-B		2,000	1,200	1,670		2,450								36	30	650	L
2AX300JV-B														44	37	780	
2AX300KV-B		2,400	1,200	2,000		2,900								64	53	1,000	N
2AX300JW-B														82	68	1,100	
2AX300KW-B	82	68	1,400	N													

3 Stage Type																	
1000kg Capacity																	
Model	Maximum Capacity (kg)	Lifting Height (mm)	Table Dimensions (mm)				Motor (kw)	Lifting Speed (sec)		Weight (kg)	Hydraulic Unit	Cable (m)		High Pressure Hose (m)			
			Width	Length	Minimum Height	Maximum Height		50Hz	60Hz			Power Source	Operating SW				
3AX100DP-B	1,000	1,400	600	800	400	1,800	1.5	3	5	-	3	5	-				
3AX100DR-B														1,700	950	2,100	
3AX100ER-B		2,050	900	1,150		2,450								25	21	330	K
3AX100DS-B														29	24	370	
3AX100ES-B		2,500	1,200	1,380		2,900								38	31	430	Internal
3AX100ET-B														40	33	460	
3AX100FT-B		52	43	630		Internal											
				680													

# Electric Screw Drive Type Lift

The heavy duty series for electric type lifts.  
Stop at just the right height, and operate quietly.

Capacity 600~2000kg



XS061010-B

- ① Made to minimize horizontal sway, work can be carried out safely.
- ② A single speed while lifting and lowering, increasing efficiency.
- ③ Even if left alone for a long time, the table will not naturally lower when raised.
- ④ Excellent stopping precision.
- ⑤ Maintenance is simple.
- ⑥ No oil spills, helping maintain a clean work environment.
- ⑦ Quiet while lifting.

600kg Capacity																			
Model	Maximum Capacity (kg)	Lifting Height (mm)	Table Dimensions (mm)			Motor (kw)	Lifting Speed (sec)				Weight (kg)	Cable (m)							
			Width	Length	Minimum Height		Maximum Height	50Hz	60Hz	50Hz		60Hz	Power Source	Operating SW					
XS060610-B	600	450	640	1,000	185	0.4	15	13	15	13	260	3	5						
XS060810-B			800											635	275				
XS061010-B			1,000													285			
XS060612-B			640											1,200	835		275		
XS060812-B			800													285			
XS061012-B			1,000															305	
XS061212-B		1,200	345																
XS060615-B		640		1,500	1,010	310													
XS060815-B		800	325																
XS061015-B		1,000					340												
XS061215-B		1,200	355																
XS060618-B		640					1,800	1,210	37										
XS060818-B		800	365																
XS061018-B		1,000		385															
XS061218-B		1,200	395																
1200kg Capacity																			
XS120810-B		1,200	450	800	1,000	230				0.75	15			12	15	12	355	3	5
XS121010-B				1,000			680	370											
XS120812-B	800			385															
XS121012-B	1,000						1,200	880	410										
XS121212-B	1,200			420															
XS120815-B	800											440							
XS121015-B	1,000		455																
XS121215-B	1,200			475															
XS120818-B	800		1,500		1,030	485													
XS121018-B	1,000			510															
XS121218-B	1,200						525												
2000kg Capacity																			
XS201012-B	2,000			650			1,000	1,200	280	1.5	20	17	20	17	545	3	5		
XS201212-B							1,200												
XS201015-B			1,000		1,080														
XS201215-B			1,200	640															
XS201018-B			1,000		1,800	300	1,300	32	27	32	27	680							
XS201218-B			1,200	705															

# Vario Screw Lift

With Teaching Function

A lift with a mind added in. Quiet, accurate and clean.

Capacity 100~300kg



Push Button SW



XS020506-B

1 Stage Type



2XS010508-B

2 Stage Type



XS0150508J-B

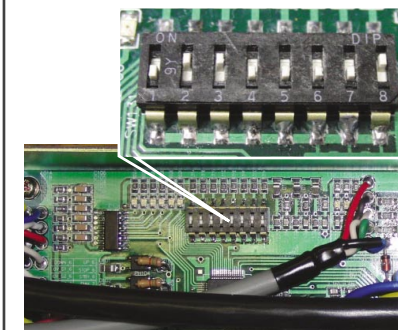
Accordion Attached

## Lift With Teaching Functions Included

The lift stop station can be registered, and made to stop in the same place again.

### Simple Registration!

Up to 14 stops can be registered in order to meet customer needs



### SW No.1

Lift movements can be set up easily.

#### Automatic Retention

Once the switch is pressed, the lift will automatically move to the set position and stop.

#### Inching

Moves as long as the switch is pressed.

### SW No.4·5

Can automatically stop at a specific height.

#### With or Without Intervening Stops

Push the switch and match it to the height you want it to stop at to register. It will automatically stop at this height next time.

### SW No.2·3

Speed can be set up.

#### Standard Speed or Half Speed

Lifting and lowering speeds can be set separately according to the operation takt.

### Option (separate charge)



Foot switch for simple operation.

The standard 3 inputs and 5 outputs setup can be customized. Outputs indicate the lifter operation state but 3 of them are customizable to necessary outputs.

## 1 Stage Type

Model	Maximum Capacity (kg)	Lifting Height (mm)	Table Dimensions (mm)			Motor (w)	Lifting Speed (sec)	Maximum Specifications Frequency (Number/ Time)	Weight (kg)	Cable (m)			
			Width	Length	Minimum Height					Maximum Height	Power Source	Operating SW	
XS010506-B	100	400	500	650	130	67	10	53	55	5.8	3.95		
XS0150508-B		540		813			670	14				35	61
XS010512-B		800		1,200			950	27				20	83
XS020506-B		400		650			550	16				30	57
XS020508-B		540		813			690	19				27	66
XS020512-B		800		1,200			970	33				15	91
XS030508-B	300	540	813	150	690	27	64	5.4	3.55				

## Accordion Attached

Model	Maximum Capacity (kg)	Lifting Height (mm)	Table Dimensions (mm)			Motor (w)	Lifting Speed (sec)	Maximum Specifications Frequency (Number/ Time)	Weight (kg)	Cable (m)			
			Width	Length	Minimum Height					Maximum Height	Power Source	Operating SW	
XS010506J-B	100	400	600	780	130	67	10	42	66	5.8	3.95		
XS0150508J-B		540		945			670	14				28	78
XS010512J-B		800		1,330			950	27				16	100
XS020506J-B		400		780			550	16				24	68
XS020508J-B		540		945			690	19				21	93
XS020512J-B		800		1,330			970	33				12	108
XS030508J-B	300	540	945	150	690	27	80	5.4	3.55				

## 2 Stage Type

Model	Maximum Capacity (kg)	Lifting Height (mm)	Table Dimensions (mm)			Motor (w)	Lifting Speed (sec)	Maximum Specifications Frequency (Number/ Time)	Weight (kg)	Cable (m)		
			Width	Length	Minimum Height					Maximum Height	Power Source	Operating SW
2XS010508-B	100	850	500	813	220	1,070	67	22	20	82	5.3	3.45
2XS010510-B		1,000	518	1,010	235	1,235		25	17			
Accordion Attached												
2XS010508J-B	100	850	600	945	220	1,070	67	22	16	100	5.3	3.45
2XS010510J-B		1,000	650	1,140	235	1,235		25	13			